



# NIH funding opportunities

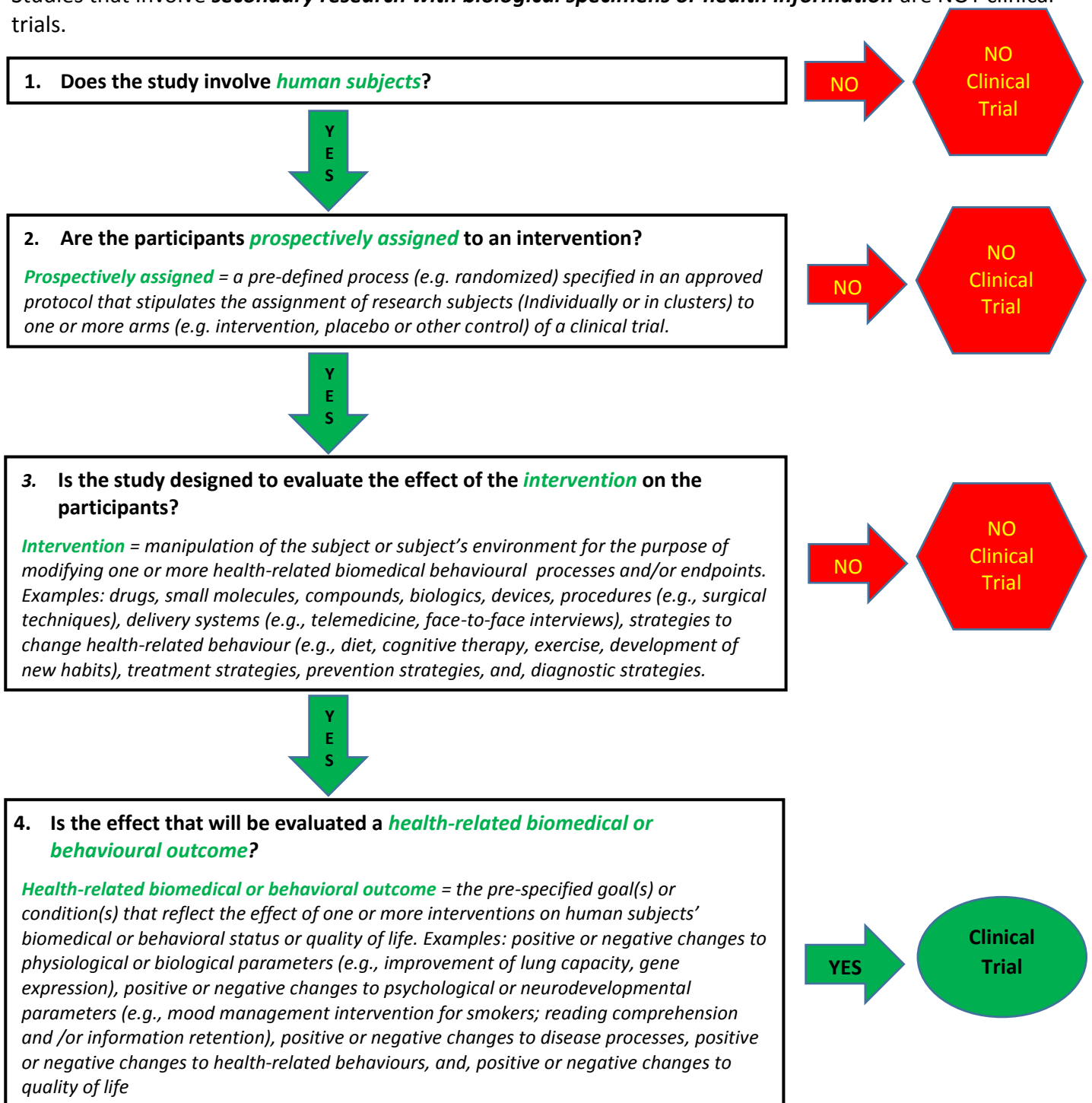


Faculty of Medicine and Health Sciences: Research Development and Support 2 Nov 2017 (#40)

[Click on blue [hyperlink](#) for further information]

**NIH Clinical Trials:** Beginning with applications due on or after **25 January 2018**, NIH is implementing policy changes to the application and reporting requirements for awards that include clinical trials (CTs). Because of these changes, some studies that were not considered CTs in the past will be going forward. Deciding whether a study is or isn't a CT should not be the result of a scientific judgement call or even based on your prior experience. Rather, it should be determined using the [Decision Tree for NIH Clinical Trial Definition](#) (see link). The diagram below will also assist you making the correct decision.

Studies that involve **secondary research with biological specimens or health information** are NOT clinical trials.



See case studies: <https://grants.nih.gov/policy/clinical-trials/case-studies.htm>